

Anti-P130Cas Rabbit pAb



WL01630

For Research Use Only. Not For Use In Diagnostic Procedures

Product Information

Product name	Anti-P130Cas Rabbit pAb	
Source	Rabbit	
Species reactivity	Human	
Tested applications	Western blot	1:500-1:1000

**Suggested working dilutions are given as a guide only. It is recommended that the user titrates the product for use in their own experiment using appropriate negative and positive controls.*

Molecular Wt.	Predicted band size: 130 kDa
	Observed band size: 110 kDa

Pack size 50/100/200/500/1000 μ l

Storage Store at -20°C. **Avoid freeze/thaw cycles.**

Storage buffer Supplied in 20 mM phosphate (pH 7.5), 150 mM NaCl, 100 μ g/ml BSA, 50% glycerol and less than 0.02% sodium azide

General Information

Background p130 Cas (Crk-associated substrate) is a docking protein containing multiple protein-protein interaction domains. The molecular cloning of Cas p130 has shown it to represent a novel SH3 containing signaling molecule with a cluster of multiple putative SH2-binding motifs for v-Crk. The substrate domain consists of 15 repeats of the YxxP consensus phosphorylation motif for Src family kinases (SFKs). Conversely, lowering the amount of p130Cas expression in ovarian, breast and prostate cancer is sufficient to block tumor growth and progression of cancer cells.

Immunogen Polyclonal antibody is produced by immunizing animals with a recombinant protein of P130Cas.

Purification Polyclonal antibody was purified by immunogen affinity chromatography.

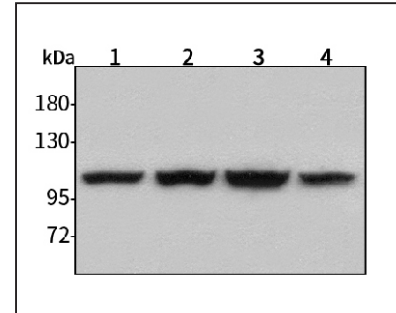
Anti-P130Cas Rabbit pAb



WL01630

For Research Use Only. Not For Use In Diagnostic Procedures

Product Images



Western blot-Anti-P130Cas pAb

Lane 1: Human HepG2 cell lysate 30 μ g

Lane 2: Human Hela cell lysate 30 μ g

Lane 3: Human BGC-823 cell lysate 30 μ g

Lane 4: Human MGC-803 cell lysate 30 μ g

Separation gel: 8% polyacrylamide

Electrophoresis: 100V, 4°C, 3h

Transmembrane: 100V, 4°C, 1h

Blocking: 5% w/v nonfat dry milk, 1 \times TBST, at RT with gentle shaking

Primary antibody: 1:1000 in blocking buffer, 4°C, overnight

Secondary antibody (WLA023a) : 1:5000-1:10000, 45min

Detection: ECL, 30s-2min