

Anti-IL6 Rabbit pAb



WL02841

For Research Use Only. Not For Use In Diagnostic Procedures

Product Information

Product name	Anti-IL6 Rabbit pAb	
Source	Rabbit	
Species reactivity	Human, Mouse, Rat	
Tested applications	WB	1:1000-1:2000
	IHC	1:100-1:400
	IF	1:300
Cellular localization	Secreted and Cell membrane	
Pack size	50/100/200/500/1000 μ l	
Storage	Store at -20°C. Avoid freeze/thaw cycles.	
Storage buffer	Supplied in 20 mM phosphate (pH 7.5), 150 mM NaCl, 100 μ g/ml BSA, 50% glycerol and less than 0.02% sodium azide	

General Information

Background IL6(Interleukin-6) is a multifunctional protein, that plays critical roles in host defense, immune response and hematopoiesis. IL6 is constitutively expressed by epidermal Langerhans cells and its expression is induced in stimulated keratinocytes. IL6 induces proliferation or differentiation in many cell types including B cells, thymocytes and T cells. IL6, in concert with TGF- β , is important for developing Th17 responses. IL6 binds to IL6R α and through this association induces gp130 homodimerization. Research studies have shown that IL6, through increasing expression of proangiogenic VEGF, may also contribute to metastatic breast cancer.

Immunogen Polyclonal antibody is produced by immunizing animals with a synthetic peptide of IL6.

Purification Polyclonal antibody was purified by Protein A affinity chromatography.

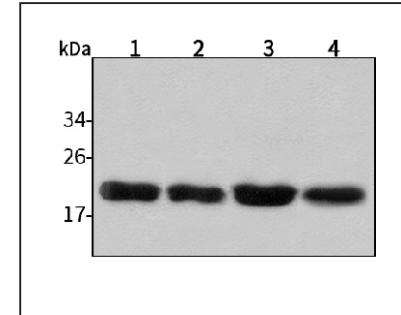
Anti-IL6 Rabbit pAb



WL02841

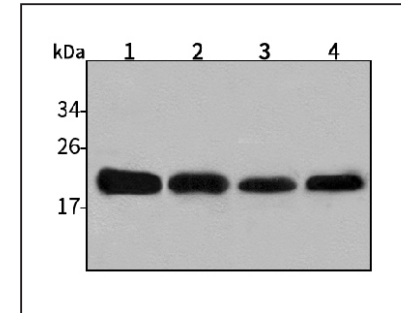
For Research Use Only. Not For Use In Diagnostic Procedures

Product Images



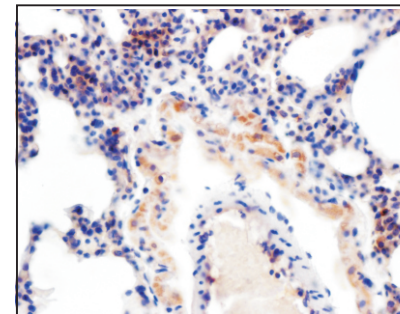
Western blot-Anti-IL6 pAb

Lane 1: Human HepG2 cell lysate
 Lane 2: Human Hela cell lysate
 Lane 3: Human BGC-823 cell lysate
 Lane 4: Human MGC-803 cell lysate
 All lanes: Anti-IL6 at 1:1000 dilution
 Lysates/proteins at 20-50 μ g per lane.
 Predicted band size: 24 kDa
 Observed band size: 21 kDa



Western blot-Anti-IL6 pAb

Lane 1: Mouse kidney tissue lysate
 Lane 2: Mouse brain tissue lysate
 Lane 3: Rat spleen tissue lysate
 Lane 4: Rat stomach tissue lysate
 All lanes: Anti-IL6 at 1:1000 dilution
 Lysates/proteins at 20-50 μ g per lane.
 Predicted band size: 24 kDa
 Observed band size: 21 kDa



Immunohistochemistry-Anti-IL6 pAb

Immunohistochemical analysis of paraffin-embedded rat lung using anti-IL6 Rabbit Antibody at 1:150 dilution.
 Perform heat mediated antigen retrieval with Tris-EDTA buffer pH 9.0

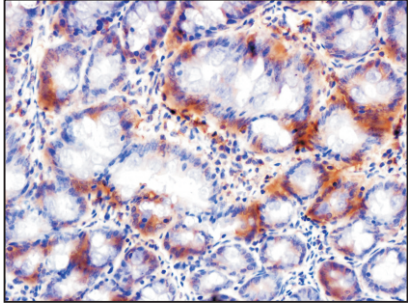
Anti-IL6 Rabbit pAb



WL02841

For Research Use Only. Not For Use In Diagnostic Procedures

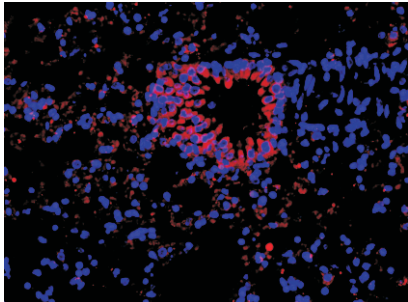
Product Images



Immunohistochemistry-Anti-IL6 pAb

Immunohistochemical analysis of paraffin-embedded mouse colon using anti-IL6 Rabbit Antibody at 1:300 dilution.

Perform heat mediated antigen retrieval with Tris-EDTA buffer pH 9.0



Immunofluorescence-Anti-IL6 pAb

Immunofluorescence analysis of paraffin-embedded mouse lung using anti-IL6 Rabbit Antibody at 1:300 dilution.

Perform heat mediated antigen retrieval with Tris-EDTA buffer pH 9.0